

# DOMO

Design by Ramos & Bassols.

**VIBIA**  
LIGHT IS CREATION

## Reference

**8201.**

## Application

Ceiling Lamps

## Installation type

Surface

## Description

Surface-mounted ceiling light. Design by Ramos & Bassols. Matt white lacquer finish with aluminium diffuser. LED light source

## Diffuser

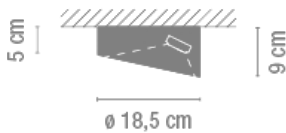
Aluminium diffuser

## Finish



**8201-03.**  
Matt white  
lacquer

## Sketch

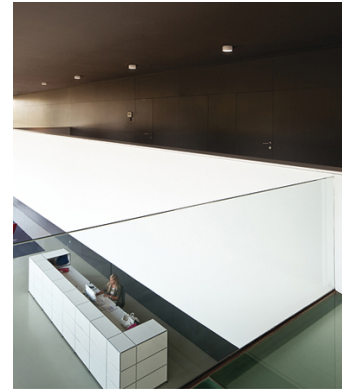
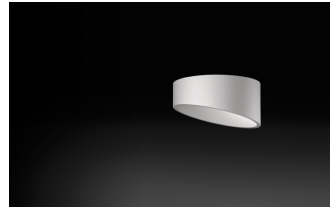


## Electrical characteristics

3 x LED 3W 700mA



Total 9.0 W



## Physical characteristics

1 Box / 0.26 x 0.26 x 0.26 m. / Vol. 0.0170 m<sup>3</sup> /  
Gross weight 1.6 kg. / Net weight 1.1 kg.

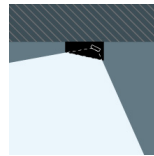
## Installation and assembly

Please, see the installation manual

## Light distribution

### Highlight

Lamp used to highlight a specific element.



## Photometric data

Efficiency : 62.635

Coordinate system : CG

Total flux : 543.66 lm

Maximum value : 1314.78 cd/klm

Light position : C=90.00 G=25.00

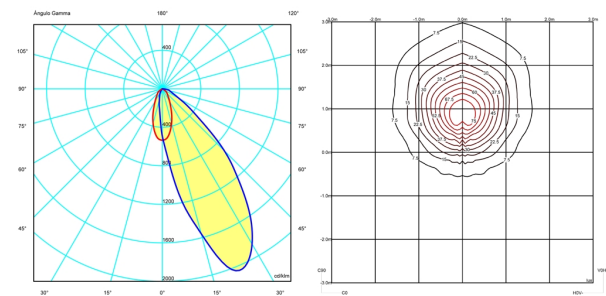
Symmetry on the planes : Symmetrical planes

270-90

Isolux : Isolux (suelo)

Light position :

X=0.00m Y=0.00m Z=3.00m



## Certificates

